



60 Hz



SUPERWATT POWER

SWT Objective:
Become the number one global brand for Chinese power equipments.

SWT Mission:
Provide clean, safe, environmental and reliable power equipments.

SWT Quality:
Continuously satisfy potential customer demands for quality products and service by manufacturing competitive power equipments.



1. STANDARDS

All generators comply with international design and quality standards such as ISO 8528(GB/T2820-97), ISO 3046, BS.EN 60034, BS5000, IEC 34-1, VDE0530, NEMA MG1-32, GB755, CSA 22-2, AS 1359, as well as the requirements of ISO 9001 and ISO 14001 quality and safety management standards.

2. GENERAL GUIDELINES FOR DERATING

Altitude: Derate 2.0% per 300m(984 ft.) elevation above 1000m(3279 ft.) up to a maximum elevation of 2450m(8000 ft.). More than 2450m(8000ft), please contacts with us or our dealer seek the help.
Temperature: Derate 6.0% per 11 °C(20 °F) temperature above 40 °C(104 °F).

3. PRODUCTS

We offers a comprehensive range of enclosed (soundproof /weatherproof) and open skid diesel and gas engine powered generators to provide continuous, prime or standby duties. All are based upon components from leading manufacturers with established track records of reliable performance and service throughout the world.

The generating set is normally supplied connected for 220 or 480 Volt, 3 Phase, 4 Wires, 60 Hz and alternative voltages /frequencies are also available according to customer orders.

3.1 ENGINE

Cummins, Perkins, Yanmar, MTU etc, as the brand of engine, is on the leading status in the world. These brand engines are with low emission, low noise and fuel consumption, long lasting, global warranty and service.

3.2 ALTERNATOR

Brushless alternator, with brushless pilot exciters are used for excellent load response with standard 2/3rd pitch stator windings to avoid excessive neutral currents and very low waveform distortions. Insulation provisions are to Class H requirements. Quality are guaranteed by their global warranty service net.

3.3 CONTROL SYSTEM

Engine mounted control panel in a vibration isolated sheet steel enclosure with a hinged lockable door. State-of-the-art, reliable and robust control and protection systems are provided as standard with tailor-made customer specific systems available request. It has engine gauges, electric meters, selector button, starting set control unit(automatic start controller and key start controller).

3.4 BASE FRAME

The complete generating set is mounted as a whole, on a heavy duty fabricated, welded steel base frame. The base frame incorporates built-in fuel tank and specially designed lifting points.

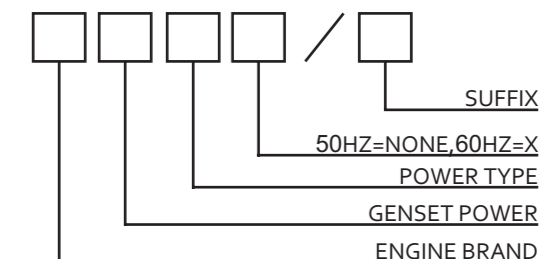
4. FACTORY TESTS

Each generator undergoes a 2-hour factory load test at 0%, 25%, 50%, 75%, 100%and 110% duty and all protection devices and control functions are simulated and checked as part of the factory testing regime. A test certificate can be provided upon request.

5. WARRANTY

A guarantee of 1000 hours or 12 months from date of commissioning or 18 months from shipping, whichever occurs first, is provided. Warranty will be invalid if customer disobey the requirements of the operation and maintenance in Generator Set Technical Manual. This is supported by the added operation and maintenance backing of the principal component manufacturers, global service networks.

6. DESIGNATION



6.1 ENGINE BRAND

- P-----Original Perkins;
- LP-----Lovol;
- C-----Original Cummins,
- CC-----Chongqing Cummins;
- DC-----Dongfeng Cummins;
- M-----MTU;
- LD-----Deutz;
- NG-----SWT Natural gas;
- IS-----Foton-Isuzu;
- L-----Lester;
- YM----Yanmar, K----Kubota;

6.2 GENSET POWER

Continuous power (C=NONE)

Continuous power is defined as being the maximum power which the generating set is capable of delivering continuously whilst supplying a constant electrical load when operated for an unlimited number of hours per year.

Prime power (P)

These ratings are applicable for supplying continuous electrical power(at variable load) in lieu of commercially purchased power. There is no limitation to the annual hours of operation and this model can supply 10% overload power for 1 hour in 12 hours.

Standby power(S)

Standby power is defined as the maximum power available, under the agreed operating conditions, for which the generating set is capable of delivering for up to 500h of operating per year.

Emergency power(E)

There ratings are applicable for supplying continuous electrical power in the event of a utility power failure, up to a maximum of 200 hours per year. No overload is permitted on these ratings. Exceeding 200 hours operation per year may result in a reduced product life.

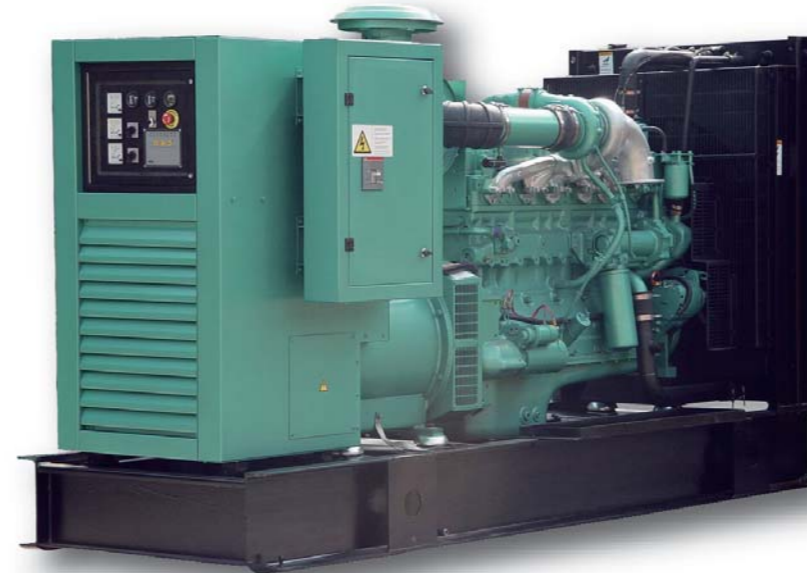
6.3 SUFFIX

- A---Weather proof,
- B---Sound proof,
- SB---Super sound proof,
- T---Trailer,
- LE---Low emission,
- 1P---1 Phase

DCEC/CCEC CUMMINS POWERED GENSETS

RANGE OF STANDARD GENSETS DC30SX TO CC1250SX

Generator Sets Model		Power(KW/KVA)		Engine		Alternator		Dimensions(L*W*H)(mm)& Weight(kg)	
		Prime	Standby	Cummins	Stamford	Leroy Somer	Open	Silent	
DC28PX	DC30SX	22/28	24/30	4B3.9-G1	PT144E	LSA42.2M6	2100*730*1570	830	2330*1110*1830
DC30PX	DC33SX	24/30	26/33	4B3.9-G1	PT144F	LSA42.2M6	2100*730*1570	845	2330*1110*1830
DC38PX	DC41SX	30/38	33/41	4BT3.9-G1	PT144H	LSA42.2L9	2100*730*1570	1080	2330*1110*1830
DC43PX	DC46SX	34/43	37/46	4BT3.9-G1	PT144J	LSA43.2S1	2100*730*1570	1105	2330*1110*1830
DC46PX	DC50SX	37/46	40/50	4BTA3.9-G2	PT144J	LSA43.2S15	2100*730*1570	1130	2330*1110*1830
DC50PX	DC55SX	40/50	44/55	4BTA3.9-G2	PT144K	LSA43.2S15	2100*730*1570	1160	2330*1110*1830
DC60PX	DC67SX	48/60	53/67	4BTA3.9-G2	UCI224D	LSA43.2S35	2100*730*1570	1220	2480*1110*1830
DC98PX	DC108SX	78/98	86/108	6BT5.9-G1	UCI224G	LSA44.2VS3	2490*830*1620	1270	2930*1110*1930
DC103PX	DC113SX	82/103	90/113	6BT5.9-G2	UCI274C	LSA44.2VS3	2490*830*1620	1300	2930*1110*1930
DC130PX	DC143SX	104/130	114/143	6BTA5.9-G2	UCI274D	LSA44.2S7	2490*830*1620	1470	2930*1110*1930
DC148PX	DC162SX	118/148	130/162	6BTA5.9-G2	UCI274E	LSA44.2S75	2490*830*1620	1530	2930*1110*1930
DC168PX	DC184SX	134/168	147/184	6CTA8.3-G2	UCI274E	LSA44.2M95	2680*860*1600	1630	3130*1110*1930
DC200PX	DC220SX	160/200	176/220	6CTA8.3-G2	UCI274G	LSA46.2M3	2680*860*1600	1730	3130*1110*1930
DC228PX	DC250SX	182/228	200/250	6CTA8.3-G2	UCI274H	LSA46.2M5	2680*860*1600	1780	3430*1110*2060
DC281PX	DC310SX	225/281	248/310	6LTA8.9-G2	UCDI274J	LSA46.2L6	2800*1090*1715	1980	3930*1120*2100
CC245PX	CC270SX	196/245	216/270	NTA855-G1	UCI274H	N.A.	3315*1100*1650	3220	4460*1100*2270
CC300PX	CC330SX	240/300	264/330	NTA855-G1	UCDI274K	LSA46.2L9	3315*1100*1650	3350	4460*1100*2270
CC344PX	CC378SX	275/344	302/378	NTA855-G1B	HCI444D	LSA46.2VL12	3315*1100*1650	3530	4460*1100*2270
CC400PX	CC440SX	320/400	352/440	NTA855-G3	HCI444E	N.A.	3315*1100*1650	3550	4460*1100*2270
CC440PX	CC480SX	352/440	387/484	KTA19-G2	HCI444FS	LSA47.2VS2	3600*1355*1910	3940	5010*1355*2205
CC480PX	CC528SX	384/480	422/528	KTA19-G3	HCI444F	LSA47.2S4	3600*1355*1910	3940	5010*1355*2205
CC525PX	CC578SX	420/525	462/578	KTA19-G3	HCI544C	LSA47.2S5	3600*1355*1910	4110	5010*1355*2205
CC575PX	CC633SX	460/575	506/633	KTA19-G4	HCI544D	LSA47.2M7	3600*1355*1910	4180	5010*1355*2205
N.A.	CC653SX	N.A.	522/653	KTA19-G8	HCI544D	LSA47.2M7	3720*1640*2040	4250	20' Standard Container
N.A.	CC756SX	N.A.	605/756	KTA19-G8	HCI544E	LSA47.2L9	3720*1640*2040	4650	20' Standard Container
CC775PX	CC853SX	620/775	682/853	KT38-G	HCI544F	LSA49.1M6	4345*1710*2300	6690	20' Standard Container
CC875PX	CC963SX	700/875	770/963	KTA38-G2	HCI634G	LSA49.1M75	4530*1710*2300	7180	20' Standard Container
CC925PX	CC1013SX	740/925	810/1013	KTA38-G2	HCI634G	LSA49.1M75	4530*1710*2300	7260	20' Standard Container
CC1063PX	CC1169SX	850/1063	935/1169	KTA38-G4	HCI634H	LSA49.1L10	4490*2060*2165	7410	20' Standard Container
CC1138PX	CC1250SX	910/1138	1000/1250	KTA38-G4	HCI634J	LSA50.2S4	4490*2060*2165	7590	20' Standard Container



DCEC/CCEC CUMMINS POWERED GENSETS

Powered by Dongfeng/Chongqing Cummins, it enjoys the features of high reliability, easy maintenance, long continuous running hours and ideal for port, railway, industrial and mining. As the largest foreign investor in China's Engine industry, Cummins owned Dongfeng Cummins Engine Co.,LTD which mainly produce B, C, L series and Chongqing Cummins Engine Co.,LTD which mainly produce M, N, K series in accordance with the Cummins global quality standards in China. The global service net of Superwatt and Cummins can provide our customers with reliable and guaranteed service.

ORIGINAL CUMMINS POWERED GENSETS

Powered by original Cummins engine, it is with the feature of superior performance, high combustion efficiency, fuel efficiency and can provide strong driving force. As high power genset, it is widely used in the area of industrial, railway, generating equipments and so on. Imported Cummins engine (Q,V,K series) are manufactured in America, UK, Japan and India in accordance with the Cummins global quality standards. The global service net of Superwatt and Cummins can provide our customers with reliable and guaranteed service.

ORIGINAL CUMMINS POWERED GENSETS

RANGE OF STANDARD GENSETS C640SX TO C1547SX

Generator Sets Model		Power(KW/KVA)		Engine		Alternator		Dimensions(L*W*H)(mm)& Weight(kg)	
		Prime	Standby	Cummins	Stamford	Leroy Somer	Open	Silent	
C581PX	C640SX	465/581	512/640	QSX15-G9	HCI544D	LSA47.2M7	3800*1400*2070	3900	5500*2030*2320
C700PX	C770SX	560/700	616/770	VTA28-G5	HCI544E	LSA49.1 S4	4100*1880*2190	5500	20' Standard Container
C880PX	C968SX	704/880	774/968	QSK23-G2	HCI634G	LSA49.1M75	4020*1500*2090	5920	20' Standard Container
C922PX	C1015SX	738/922	812/1015	QSK23-G3	HCI634G	LSA49.1M75	4020*1500*2090	5920	20' Standard Container
C1050PX	C1155SX	840/1050	924/1155	QST30-G3	HCI634H	LSA49.1L10	4400*1760*2275	6650	20' Standard Container
C1163PX	C1279SX	930/1163	1023/1279	QST30-G4	HCI634J	LSA50.2S4	4400*1760*2275	6990	20' Standard Container
C1406PX	C1547SX	1125/1406	1238/1547	KTA50-G3	P1734A	LSA50.2M6	5650*2060*2330	9800	20' Standard Container

60HZ

480V
220VPOWER
FACTOR 0.8PHASE
3P4W

Generator Sets Model		Power(KW/KVA)		Engine	Alternator		Dimensions(L*W*H)(mm)&Weight(kg)			
		Prime	Emergency		Stamford	Leroy Somer	Open	Silent		
P10PX	P11EX	8.0/10	8.8/11	Perkins 403D-11G	PT144F	LSA42.2M6	1565x730x1200	347	1850x740x1107	527
P16PX	P17.5EX	12.7/16	14/17.5	Perkins 403D-15G	PT144F	LSA42.2M6	1565x730x1200	428	1850x740x1160	608
P22.5PX	P25EX	18/22.5	20/25	Perkins 404D-22G	PT144F	LSA42.2M6	1700x730x1240	501	1850x740x1160	681
P30PX	P33EX	24/30	26.4/33	Perkins 404D-22TG	PT144F	LSA42.2M6	1700x730x1245	541	1850x740x1160	721
P33PX	P36.5EX	26.5/33	29/36.5	Perkins 1103C-33G2	PT144G	LSA42.2M7	1740x730x1565	762	2330x1110x1830	1300
P35PX	P38EX	28/35	31/38	Perkins 404D-22TAG	PT144G	LSA42.2M7	1740x730x1565	762	2330x1110x1830	1300
P35PX	P38EX	28/35	31/38	Perkins 1103A-33G	PT144G	LSA42.2L9	1740x730x1565	762	2330x1110x1830	1300
P53PX	P58EX	40/50	44/58	Perkins 1103A-33TG1	PT144K	LSA43.2S25	2030x730x1565	870	2330x1110x1830	1426
P68PX	P74EX	54/68	59.5/74	Perkins 1103A-33TG2	UCI224E	LSA43.2L65	2030x730x1565	890	2330x1110x1830	1426
P76PX	P84EX	61/76	67/84	Perkins 1104A-44TG1	UCI224F	LSA43.2L8	2135x730x1595	978	2480x1110x1830	1675
P91PX	P100EX	73/91	80/100	Perkins 1104C-44TAG1	UCI224G	LSA44.2VS3	2235x730x1595	1052	2480x1110x1830	1752
P115PX	P126EX	92/115	101/126	Perkins 1104C-44TAG2	UCI274C	LSA44.2VS45	2235x730x1595	1090	2480x1110x1830	1790
P150PX	P165EX	120/150	132/165	Perkins 1006TAG	UCI274E	LSA44.2S75	2565x730x1575	1376	2930x1110x1930	1951
P156PX	P172EX	125/156	138/172	Perkins 1106C-E66TAG2	UCI274E	LSA44.2S75	2645x730x1630	1499	3430x1110x2060	2074
P169PX	P186EX	135/169	149/186	Perkins 1106C-E66TAG3	UCI274E	LSA44.2M95	2645x730x1630	1539	3430x1110x2060	2114
P200PX	P220EX	160/200	176/220	Perkins 1106C-E66TAG4	UCI274G	LSA46.2M3	2645x730x1630	1644	3430x1110x2060	2487
P231PX	P254EX	185/231	203.5/254	Perkins 1306C-E87TAG3	UCI274H	LSA46.2M5	3035x900x1525	1695	3930x1130x2200	2720
P245PX	P270EX	196/245	216/270	Perkins 1306C-E87TAG4	UCI274H	LSA46.2L6	3035x900x1525	1695	3930x1130x2200	2720
P400PX	P440EX	320/400	352/440	Perkins 2206C-E13TAG2	HCI444E	LSA47.2VS2	3500x1105x1960	3385	4930x1380x2280	4895
P500PX	P563EX	400/500	450/563	Perkins 2506A-E15TAG1	HCI544C	LSA47.2S4	3935x1150x2080	3583	5230x1380x2280	5305
P500PX	P563EX	400/500	450/563	Perkins 2506C-E15TAG3	HCI544C	LSA47.2S4	3935x1150x2080	3691	5230x1380x2280	5330
P569PX	P626EX	455/569	501/626	Perkins 2506C-E15TAG3	HCI544D	LSA47.2M7	3935x1150x2080	3691	5230x1380x2280	5330
P625PX	P688EX	500/625	550/688	Perkins 2806A-E18TAG1A	HCI544E	LSA47.2M7	3690x1535x2100	4322	20' Standard Container	7870
P681PX	P750EX	545/681	600/750	Perkins 2806C-E18TAG3	HCI544E	LSA47.2L9	3690x1535x2100	4130	20' Standard Container	7680
P750PX	P825EX	600/660	750/825	Perkins 4006-23TAG2A	HCI544F	LSA49.1M6	4450x1710x2290	5113	20' Standard Container	8553
P844PX	P928EX	675/844	743/928	Perkins 4006-23TAG3A	LV1634B	N.A.	4450x1710x2290	5413	20' Standard Container	8863
P995PX	P1095EX	796/995	876/1095	Perkins 4008TAG2	HCI634H	LSA49.1L9	4700x2045x2475	7730	40' Standard Container	15830
P1252PX	P1378EX	1020/1275	1122/1400	Perkins 4012-46TAG2A	HCI634K	LSA50.2S4	5220x2130x2600	9440	40' Standard Container	17280
P1505PX	P1656EX	1204/1505	1324/1656	Perkins 4012-46TAG2A	P1734A	LSA50.2L7	5220x2130x2600	9840	40' Standard Container	17640
P1710PX	P1881EX	1368/1710	1504/1881	Perkins 4012-46TAG3A	P1734C	N.A.	5370x2130x2600	10000	40' Standard Container	17640

ORIGINAL PERKINS SERIES GENSETS

RANGE OF STANDARD GENERATOR SETS P11EX TO P1881EX



ORIGINAL PERKINS SERIES GENSETS

Powered by original Perkins engine, it enjoys high stability, reliability, durability and long life with a wide range of power output. It is widely used in the area of communication, industry, projects, mining, rescuing, military and so on. The series of 400, 1100, 1300, 2000, 4000 diesel engines are manufactured by UK Perkins or its Subordinate factory according to global quality standards. The global service net of Superwatt and Perkins can provide our customers with reliable and guaranteed service.

YANMAR SERIES

RANGE OF YM10SX-1P TO YM74SX

60HZ		POWER FACTOR 0.8		PHASE 1P2W		230V		
Generator Sets Model		Power(KW/KVA)		Engine		Alternator		
Continuous	Standby	Continuous	Standby	Yanmar	Stamford	Leroy Somer	Dimensions(L*W*H)(mm)&Weight(kg)	
YM9X-1P	YM10SX-1P	7/9	7.7/10	3TNV76	PI044F	N.A.	Open 1460*730*1170 520	Silent 1800*740*1150 590
YM11.5X-1P	YM12SX-1P	9.2/11.5	10/12.7	3TNV82A	PI044G	LSA42.2S4	530	1800*740*1150 605
YM15X-1P	YM16.2SX-1P	11.8/15	13/16.2	3TNV88	PI044H	LSA42.2S5	570	1800*740*1150 645
YM16.5X-1P	YM18SX-1P	13.2/16.5	14.5/18	3TNV84T	PI144D	LSA42.2M6	605	2000*740*1150 680
YM20X-1P	YM22SX-1P	16/20	17.6/22	4TNV88	PI144E	LSA42.2M7	655	2000*740*1150 745
YM25X-1P	YM27.5SX-1P	20/25	22/27.5	4TNV84T	PI144H	LSA43.2S1	670	2000*740*1150 760
YM35X-1P	YM38.5SX-1P	28/35	31/38.5	4TNV98	PI144K	LSA43.2S25	800	2330*1110*1830 895
YM37.5X-1P	YM41SX-1P	30/37.5	33/41	4TNV98	UCI224D	LSA43.2M45	810	2330*1110*1830 910

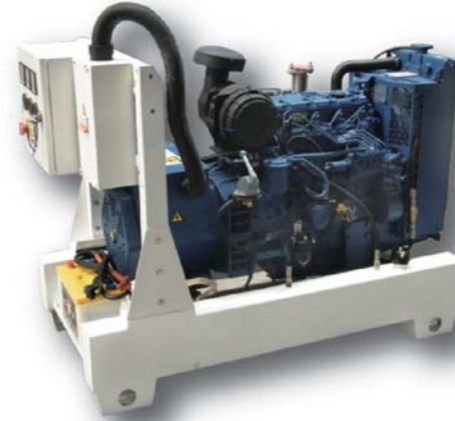
60HZ		POWER FACTOR 0.8		PHASE 3P4W		480V 220V		
Generator Sets Model		Power(KW/KVA)		Engine		Alternator		
Continuous	Standby	Continuous	Standby	Yanmar	Stamford	Leroy Somer	Dimensions(L*W*H)(mm)&Weight(kg)	
YM9X	YM10SX	7.2/9	8/10	3TNV76	PT044D	N.A.	Open 1460*730*1170 510	Silent 1800*740*1150 580
YM12X	YM13.2SX	9.6/12	10.6/13.2	3TNV82A	PT044E	N.A.	520	1800*740*1150 595
YM15X	YM16.5SX	12/15	13.2/16.5	3TNV88	PT044F	N.A.	560	1800*740*1150 635
YM17X	YM19SX	13.6/17	15.2/19	3TNV84T	PT044G	LSA42.2S4	595	1800*740*1150 670
YM20.5X	YM22.5SX	16.4/20.5	18/22.5	4TNV88	PT044H	LSA42.2S4	645	2000*740*1150 720
YM25.5X	YM28.5SX	20.4/25.5	22.8/28.5	4TNV84T	PT144E	LSA42.2S5	660	2000*740*1150 740
YM34X	YM37.5SX	27.2/34	30/37.5	4TNV98	PT144G	LSA42.2M7	790	2250*740*1150 870
YM40X	YM44SX	32/40	35.2/44	4TNV98	PT144H	LSA43.2 S1	800	2250*740*1150 890
YM49X	YM54SX	39.2/49	43.2/54	4TNV98T	PT144K	LSA43.2 S15	840	2250*740*1150 925
YM58X	YM64SX	46.4/58	51.2/64	4TNV106	UCI224D	LSA43.2 S35	1000	2450*1110*1830 1065
YM67X	YM74SX	53.6/67	59.2/74	4TNV106T	UCI224E	LSA43.2 L65	1000	2450*1110*1830 1065



It is powered by Yanmar engine with compact structure and simple operation and the feature of environmental friendly, high reliability and fuel efficiency. It is compliant with EU and EPA emission standard. As small power genset, it is widely used in the area of industry, railway, construction and so on. Yanmar engine is imported from Japan.

KUBOTA SERIES

RANGE OF K12.8SX-1P TO K49SX



KUBOTA SERIES GENSETS

Powered by Kubota, it is compact and environmental friendly with high reliability and fuel efficiency, easy to operate and in compliance with EU and EPA. As small power output genset, it is widely used in the area of industry, railway and construction. The engine is imported from Japan. The global service net of Superwatt and Kubota can provide our customers with reliable and guaranteed service.

60HZ		POWER FACTOR 0.8		PHASE 1P2W		230V		
Generator Sets Model		Power(KW/KVA)		Engine		Alternator		
Continuous	Standby	Continuous	Standby	Kubota	Stamford	Leroy Somer	Dimensions(K*W*H)(mm)&Weight(kg)	
K11.6X-1P	K12.8SX-1P	9.3/11.6	10.2/12.8	D1105-BG	PI044G	LSA42.2S4	Open 1460*730*1170 550	Silent 1800*810*1150 620
K15X-1P	K16.5SX-1P	12/15	13.2/16.5	V1505-BG	PI144D	LSA42.2S5	560	2000*810*1150 640
K18X-1P	K20SX-1P	14.5/18	16/20	D1703-BG	PI144E	LSA42.2M6	620	2000*810*1150 700
K20X-1P	K22SX-1P	16/20	17.6/22	V2203-BG	PI144E	LSA42.2M7	650	2250*810*1150 730
K24X-1P	K26.5SX-1P	19.3/24	21.2/26.5	V2203-BG	PI144G	LSA43.2S1	670	2250*810*1150 750
K27X-1P	K30SX-1P	22/27	24.2/30	V2003-T-BG	PI144H	LSA43.2S1	700	2250*810*1150 780
K37X-1P	K40.4SX-1P	29.4/37	32.3/40.4	V3300-BG	UCI224C	LSA43.2M45	750	2450*810*1150 830
K44X-1P	K49SX-1P	35.4/44	39/49	V3300-T-BG	UCI224D	LSA43.2L65	820	2450*810*1150 900

60HZ		POWER FACTOR 0.8		PHASE 3P4W		480V 220V		
Generator Sets Model		Power(KW/KVA)		Engine		Alternator		
Continuous	Standby	Continuous	Standby	Kubota	Stamford	Leroy Somer	Dimensions(L*W*H)(mm)&Weight(kg)	
K12X	K13.2SX	9.6/12	10.6/13.2	D1105-BG	PT044E	N.A.	Open 1460*730*1170 550	Silent 1800*810*1150 620
K15X	K16.5SX	12/15	13.2/16.5	V1505-BG	PT044F	N.A.	560	1800*810*1150 640
K18X	K20SX	14.5/18	16/20	D1703-BG	PT044G	N.A.	620	1800*810*1150 700
K20X	K22SX	16/20	17.6/22	V2203-BG	PT044H	LSA42.2S4	650	2000*810*1150 730
K24X	K26.5SX	19.3/24	21.2/26.5	V2203-BG	PT144D	LSA42.2S5	670	2000*810*1150 750
K27X	K30SX	22/27	24.2/30	V2003-T-BG	PT144E	LSA42.2M6	700	2250*810*1150 780
K37X	K40.4SX	29.4/37	32.3/40.4	V3300-BG	PT144H	LSA42.2L9	750	2250*810*1150 830
K44X	K49SX	35.4/44	39/49	V3300-T-BG	PT144J	LSA43.2S15	820	2250*810*1150 900

MTU SERIES

RANGE OF M880SX TO M3781SX



MTU SERIES GENSETS

The genset is powered by MTU which used high-pressure common-rail EFI technology, greatly improved combustion efficiency and lowered fuel consumption and emission. It can provide strong driving force and run long hours continuously. As high power generator with the function of fault self-diagnose and remote control, it is widely used in the area of industry, railway, power equipment and so on. The MTU2000 series is made in Suzhou and the 4000 series is imported from Germany. The global service net of Superwatt and MTU can provide our customers with reliable and guaranteed service.

60Hz 480V 220V POWER FACTOR 0.8 PHASE 3P4W

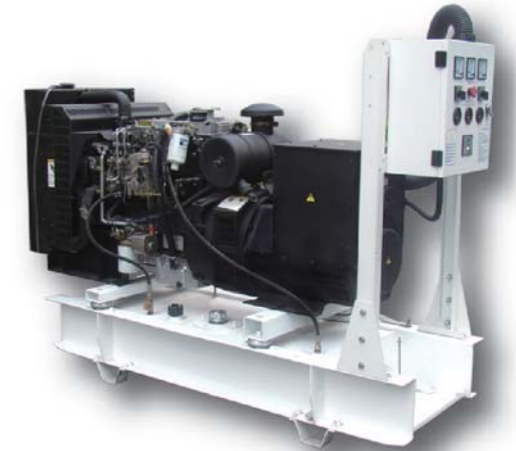
Generator Sets Model	Power(KW/KVA)		Engine	Alternator	Dimensions(L*W*H)(mm)& Weight(kg)			
	Prime	Standby			Open		Silent	
					Length	Width		
M800PX	640/800	704/880	12V2000G45	HCI644F	4100x1580x2130	8000	20' Standard Container	11500
M900PX	720/900	792/990	12V2000G85	LV1634B	4500x1580x2280	8500	20' Standard Container	11500
M1000PX	800/1000	880/1100	16V2000G45	HCI634G	4500x1580x2280	9000	20' Standard Container	12500
M1125PX	900/1125	990/1238	16V2000G85	HCI634H	4700x1900x2430	9500	20' Standard Container	12500
M1375PX	1100/1375	1210/1513	18V2000G85	HCI634K	4700x1900x2430	9500	40' Standard Container	13500
M1650PX	1320/1650	1452/1815	12V4000G43	PI734B	5350x2100x2660	13500	40' Standard Container	19500
M1750PX	1400/1750	1540/1925	12V4000G43	PI734C	5400x2100x2660	14500	40' Standard Container	20000
M2000PX	1600/2000	1760/2200	12V4000G83	PI734D	5500x2100x2660	15500	40' Standard Container	20500
M2300PX	1840/2300	2024/2530	16V4000G43	PI734E	5800x2630x2800	16500	N.A.	N.A.
M2600PX	2080/2600	2288/2860	16V4000G83	PI734F	5900x2630x2800	18000	N.A.	N.A.
M2750PX	2200/2750	2420/3025	20V4000G43	PI734G	6100x2700x2800	18000	N.A.	N.A.
M2875PX	2300/2875	2530/3163	20V4000G43	LVS1804R2	6100x2700x2800	18000	N.A.	N.A.
M3125PX	2500/3125	2750/3438	20V4000G83	LVS1804S2	6500x2700x2800	18000	N.A.	N.A.
M3438PX	2750/3438	3025/3781	20V4000G83L	LVS1804T2	6800x2800x3000	19500	N.A.	N.A.

60Hz 480V 220V POWER FACTOR 0.8 PHASE 3P4W

Generator Sets Model	Power(KW/KVA)		Engine	Alternator	Dimensions(L*W*H)(mm)& Weight(kg)			
	Prime	Standby			Open		Silent	
					Length	Width		
LP29PX	23/29	25/31	1003G	Stamford PT144E	2000x730x1550	785	2330x1110x1830	899
LP34PX	27/34	30/37	1003G	Stamford PT144G	2000x730x1550	825	2330x1110x1830	924
LP37PX	29.5/37	32/40	1003TG	Stamford PT144H	2000x730x1550	840	2330x1110x1830	950
LP46PX	37/46	40/50	1003TG	Stamford PT144J	2000x730x1550	850	2330x1110x1830	1010
LP49PX	39/49	43/54	1003TG	Stamford PT144K	2000x730x1550	900	2330x1110x1830	1120
LP38PX	30/37.5	33/41	1004G	Stamford PT144H	2155x730x1555	875	2330x1110x1830	1080
LP47PX	37.5/47	41/51	1004G	Stamford PT144J	2155x730x1555	940	2330x1110x1830	1145
LP48PX	38.5/48	42/53	1004G	Stamford PT144K	2155x730x1555	950	2330x1110x1830	1155
LP63PX	50/63	55/69	1004TG	Stamford UC1224D	2155x730x1555	1280	2480x1110x1830	1530
LP70PX	56/70	61/76	1004TG	Stamford UC1224E	2155x730x1555	1310	2480x1110x1830	1560
LP85PX	68/85	75/94	1004TG	Stamford UC1224F	2155x730x1555	1350	2480x1110x1830	1590
LP98PX	78/98	86/108	1006TG1A	Stamford UC1224G	2645x730x1555	1530	2930x1110x1930	1930
LP110PX	88/110	97/121	1006TG1A	Stamford UC1274C	2645x730x1555	1610	2930x1110x1930	2010
LP118PX	94/118	103/128	1006TG2A	Stamford UC1274C	2645x730x1555	1610	2930x1110x1930	2010
LP138PX	110/138	121/150	1006TAGA	Stamford UC1274D	2645x730x1555	1630	2930x1110x1930	2030
LP154PX	123/154	135/169	1006TAG	Stamford UC1274E	2645x730x1555	1680	2930x1110x1930	2080

LOVOL SERIES

RANGE OF LP31SX TO LP169SX



LOVOL SERIES GENSETS

Powered by Lovol engine (former Tianjin Perkins), it has the features of compact structure, low noise, fuel efficiency and high performance price ratio. It is the first choice of small power gensets and widely used in the area of communication, railway, projects, mining, rescuing and so on. The 1003, 1004, 1006 series of Lovol engine are manufactured in Tianjin using UK Perkins technology.

LESTER SERIES

RANGE OF L10SX-1P TO L48SX

60HZ	230V		POWER FACTOR 0.8	PHASE 1P2W	Power(KW/KVA)		Engine		Alternator		Dimensions(L*W*H)(mm)& Weight(kg)	
	Prime	Standby			Standby	Lester	Stamford	Leroy Somer	Open	Silent		
L9PX-1P	7/9	8/10	380D	PI044F	N.A.	1300x730x1080	400	1850x800x1160	520			
L11PX-1P	8.6/11	9.5/12	385D	PI044G	N.A.	1300x730x1080	425	1850x800x1160	550			
L13PX-1P	10.4/13	12/15	480D	PI044H	LSA42.2S4	1400x730x1080	475	1850x800x1160	580			
L18PX-1P	14.4/18	16/20	N485D	PI144E	LSA42.2M6	1400x730x1080	510	1850x800x1160	625			
L21PX-1P	16.8/21	18.4/23	490D	PI144F	LSA42.2L9	1500x745x1080	590	2050x800x1160	725			
L25PX-1P	20/25	22/28	490D	PI144H	LSA43.2S1	1500x745x1080	610	2050x800x1160	745			
L30PX-1P	24/30	26.4/33	498D	PI144J	LSA43.2S15	1500x745x1080	635	2050x800x1160	770			
L33PX-1P	26.4/33	29.6/37	4102D	PI144K	LSA43.2S25	1700x790x1080	715	2050x800x1160	845			

60HZ	480V 220V		POWER FACTOR 0.8	PHASE 3P4W	Power(KW/KVA)		Engine		Alternator		Dimensions(L*W*H)(mm)& Weight(kg)	
	Prime	Standby			Standby	Lester	Stamford	Leroy Somer	Open	Silent		
L10SX	8/10	8.8/11	380D	PT044E	N.A.	1300x730x1080	390	1850x800x1160	510			
L15SX	11/14	12/15	480D	PT044F	N.A.	1400x730x1080	465	1850x800x1160	590			
L19SX	13.5/17	15.2/19	480D	PT044G	N.A.	1400x730x1080	475	1850x800x1160	580			
L22SX	16/20	17.6/22	N485D	PT044H	LSA42.2S4	1400x730x1080	495	1850x800x1160	620			
L30SX	21.6/27	24/30	490D	PT144E	LSA42.2M6	1500x745x1080	575	2050x800x1160	705			
L32SX	23/29	25.6/32	498D	PT144E	LSA42.2M6	1500x745x1080	610	2050x800x1160	740			
L38SX	27.5/34	30.2/38	4102D	PT144G	LSA42.2M7	1700x790x1080	655	2050x800x1260	785			
L41SX	30/38	33/41	4102D	PT144H	LSA42.2L9	1700x790x1080	695	2050x800x1260	825			
L44PX	35/44	38.5/48	4105D	PT144J	LSA43.2S1	1700x790x1080	810	2170x800x1260	945			



LESTER SERIES GENSETS

Lester series is powered by domestic engine with high performance, optimized its fueling and cooling system. It is small-sized and compact with high adaptability, reliability, high performance price ratio and ideal one of small power genset.

FOTON-ISUZU SERIES

RANGE OF IS28SX-1P TO IS45SX

60HZ	230V		POWER FACTOR 0.8	PHASE 1P2W	Power(KW/KVA)		Engine		Alternator		Dimensions(L*W*H)(mm)& Weight(kg)	
	Prime	Standby			Standby	Isuzu	Stamford	Leroy Somer	Open	Silent		
IS28PX-1P	20/25	22/28	4JB1	PI144H	LSA43.2 S1	1830x730x1170	585	2050x860x1160	720			
IS30PX-1P	24/30	26/33	4JB1	PI144J	LSA43.2 S15	1860x730x1170	600	2050x860x1160	770			
IS38PX-1P	28/35	30.8/39	4JB1-T1	PI144K	LSA43.2 S25	1875x730x1170	610	2050x860x1160	860			
IS40PX-1P	32/40	35.2/44	4JB1-T1	UCI224D	LSA43.2 L65	N.A.	N.A.	N.A.	N.A.			

60HZ	480V 220V		POWER FACTOR 0.8	PHASE 3P4W	Power(KW/KVA)		Engine		Alternator		Dimensions(L*W*H)(mm)& Weight(kg)	
	Prime	Standby			Standby	Isuzu	Stamford	Leroy Somer	Open	Silent		
IS31SX	22/28	24/30	4JB1	PT144E	LSA42.2 M6	1745x730x1170	550	2050x860x1160	695			
IS35SX	26/33	28/35	4JB1	PT144F	LSA42.2 M7	1760x730x1170	560	2050x860x1160	720			
IS38PX	30/38	33/41	4JB1-T1	PT144H	LSA42.2 L9	1830x730x1170	585	2050x860x1160	790			
IS41PX	33/41	36/45	4JB1-T1	PT144H	LSA43.2 S1	1830x730x1170	585	2050x860x1160	845			



FOTON-ISUZU SERIES GENSETS

It is powered by Foton engine, whose 4JB1 series is developed in cooperation with Austria AVL company on the base of ISUZU engine. It is small-sized and compact with high adaptability and reliability and is an ideal genset in the 15kW to 30kW series gensets.

CONTROL SYSTEMS

Genset of SWT is equipped with the control system of Deep Sea, Delf, Comap or other famous brands. The whole control system is easy to operate, reliable, safe and powerful in its functions. According to their different functions, the control systems can be specified into key start controller model, automatic start control model and PCRC three remote control systems. The additional electric meter is convenient for customers to check the operating state of the genset. Emergency stop push button can meet the requirement of customers' emergency operation. The control panel system is water-proof and damp-proof.

Main Features

	702MS	702AS	703	704	3110	AS6110	GC-1F	MRS16	AMF25	IG-NT
BRAND	DEEPSEA				SWT	DEIF	COMAP			
General										
AVR	●	●	●	●	●	●	●	●	●	●
Electronic engine enabled	×	×	×	×	●	×	●	●	●	●
Glow plug control	●	●	●	●	●	●	●	●	●	●
Cycle cranking	×	●	●	●	●	●	●	●	●	●
PC Remote control	×	×	×	×	×	●	●	●	●	●
Fault history	×	×	×	×	×	×	●	×	×	●
Operator interface										
Manual start/stop	●	●	●	●	●	●	●	●	●	●
Auto/remote start	×	●	●	●	●	●	●	●	●	●
Exercise function	×	×	×	×	×	×	●	×	●	●
Auto LED	×	×	●	●	●	●	●	×	×	×
Manual LED	×	×	×	×	●	●	●	×	×	×
Common Shutdown LED	×	×	×	×	●	●	●	×	×	×
Common Warning LED	×	×	×	×	●	●	●	×	×	×
Fail to Start LED	×	●	●	●	×	×	×	×	×	×
Emergency stop(local and remote)	●	●	●	●	●	●	●	●	●	●
Alphanumeric screen LCD	×	×	×	×	●	●	●	●	●	●
Fault reset	●	●	●	●	●	●	●	●	●	●
Measurement & Instrumentation										
Oil Pressure	●	●	●	●	●	●	●	●	●	●
Coolant Temperature	●	●	●	●	●	●	●	●	●	●
Engine Speed	×	×	×	×	●	●	●	●	●	●
Fuel Level	●	●	●	●	●	●	●	●	●	●
Hours Run	●	●	●	●	●	●	●	●	●	●
Number of Starts	×	×	×	×	×	●	●	●	●	●
Battery voltage	●	●	●	●	●	●	●	●	●	●
Measurement & Instrumentation										
3 Phase L-L & L-N Voltage & Frequency	●	●	●	●	●	●	●	●	●	●
3 Phase Current	●	●	●	●	●	●	●	●	●	●
KWh	○	○	○	○	○	●	●	●	●	●
Total kVA	○	○	○	○	○	●	●	●	●	●
Total kW & kVA	○	○	○	○	○	●	●	●	●	●
PF	○	○	○	○	○	●	●	●	●	●
Per Phase kVA	○	○	○	○	○	●	●	●	●	●
Per Phase kVA, kW	○	○	○	○	○	●	●	●	●	●
Shutdown Protection & Indication										
Low Fuel Level	×	×	×	×	×	●	●	●	●	●
Low Oil Pressure	●	●	●	●	●	●	●	●	●	●
High Engine Coolant temperature	●	●	●	●	●	●	●	●	●	●
Fail to Start	●	●	●	●	●	●	●	●	●	●
Over Speed	●	●	●	●	●	●	●	●	●	●
Under Speed	●	●	●	●	●	●	●	●	●	●
Low Coolant Level	○	×	○	○	○	●	●	●	●	●

- Standard
- Option
- × Not available

Control panel for open style



Main Features

	702MS	702AS	703	704	3110	AS6110	GC-1F	MRS16	AMF25	IG-NT
BRAND	DEEPSEA				SWT	DEIF	COMAP			
Shutdown Protection & Indication										
Under & Over Voltage	×	×	×	×	×	●	●	●	●	●
Under & Over Frequency	×	×	×	×	×	●	●	●	●	●
Over Current	×	×	×	×	×	●	●	●	●	●
Reverse Power	×	×	×	×	×	×	●	×	×	●
Threshold Warning Indications										
Low Oil Pressure	×	×	×	×	×	●	●	●	●	●
High Engine Coolant Temperature	×	×	×	×	×	●	●	●	●	●
Low Battery Voltage	×	×	×	×	×	●	●	●	●	●
Batt. Alt. Charge Fault	●	●	●	●	●	●	●	●	●	●
Over Current	×	×	×	×	×	●	●	●	●	●
Overload	×	×	×	×	×	●	●	●	●	●
Paralleling Capability										
Auto Synchronising(Isolated Bus)	×	×	×	×	×	×	×	×	×	●
kW & Var Load Sharing Control	×	×	×	×	×	×	×	×	×	●
Auto Synchronising(Utility Bus)	×	×	×	×	×	×	×	×	×	●
Base Load(Utility Bus)	×	×	×	×	×	×	×	×	×	●
Peak	×	×	×	×	×	×	×	×	×	●
Power Transfer Function										
Open Transition Transfer	×	×	×	●	×	×	●	×	●	●
Transfer & Base Load(Utility)	×	×	×	×	×	×	×	×	×	●
Gen/mains Breaker Control	×	×	×	●	×	×	●	×	●	●
Gen/mains Breaker Status Protection	×	×	×	×	×	×	●	×	●	●
Environment										
Operating Temp. Range -30°C to +70°C	●	●	●	●	●	●	●	●	●	●
Humidity up to 95% (non condensing)	●	●	●	●	●	●	●	●	●	●
Codes & Standards										
CE Compliant	●	●	●	●	●	○	●	●	●	●
UL Certified	●	●	●	●	●	○	●	×	×	×

Control panel for soundproof

